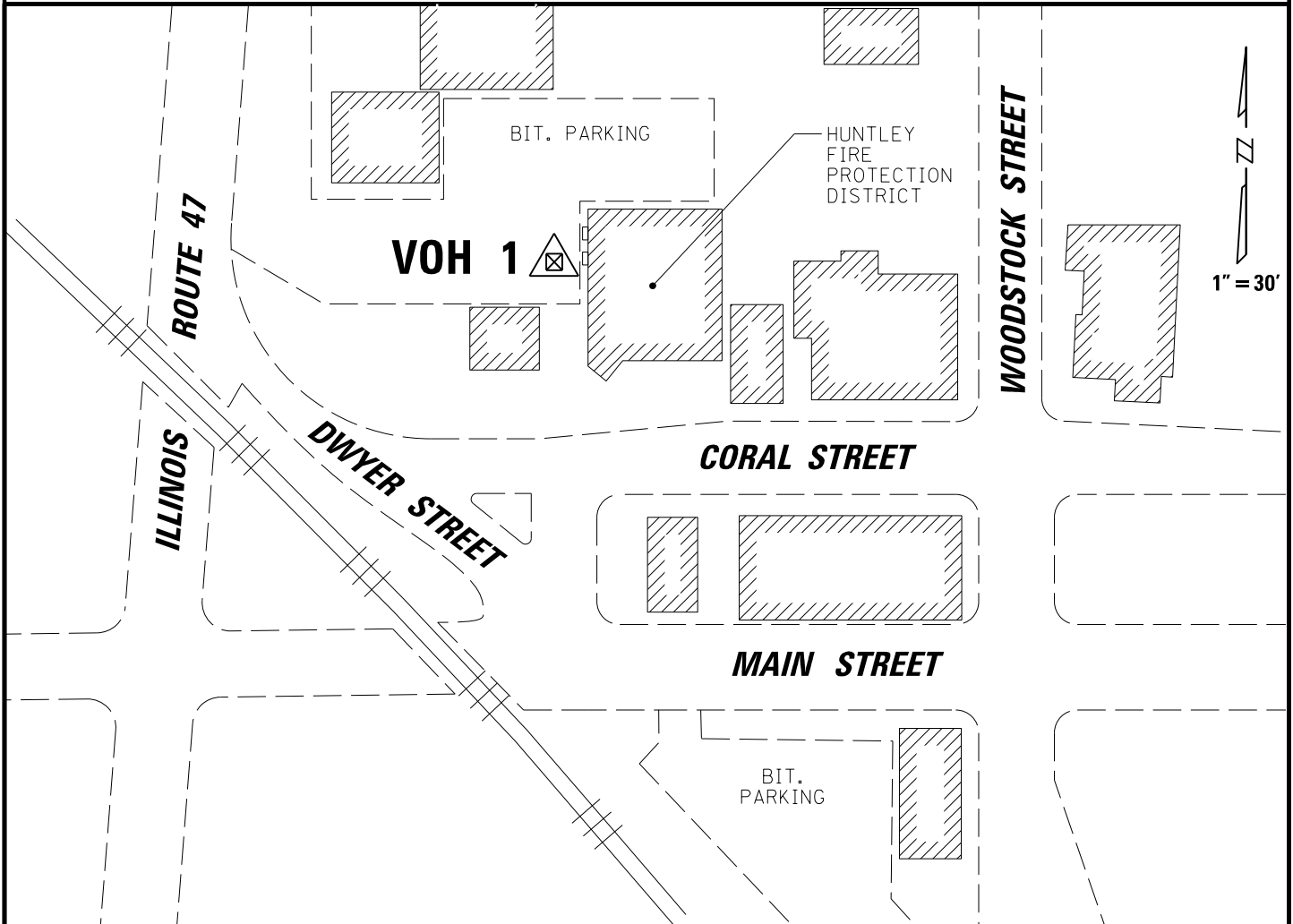




BENCHMARK INFORMATION SHEET



STATION LOCATION:

2" BRONZE DISC SET IN THE CONCRETE PLATFORM AT THE WEST ENTRANCE DOOR TO THE HUNTLEY FIRE PROTECTION DISTRICT BUILDING.

BENCHMARK BASIS:

McHENRY COUNTY GEODETIC CONTROL NETWORK PROJECT REPORT "GPS-000268-4", DATED MARCH 19, 2001, PERFORMED BY SMITH ENGINEERING CONSULTANTS, INC. (4th ORDER CLASS 1)

CAUTION:

USE OF THIS INFORMATION SHOULD BE SUBJECT TO STRICT PROFESSIONAL SURVEYING PRINCIPLES AND VERIFICATION CHECKS. MONUMENTS MAY HAVE BEEN DISTURBED SINCE BEING ESTABLISHED BY CBBEL, WHICH MAY AFFECT THE VALIDITY AND ACCURACY OF THE DATA HEREIN PROVIDED. THIS DATA MAY FROM TIME-TO-TIME BE UPDATED.

STATION NAME:

VOH 1

DATE ESTABLISHED:

MAY 11, 2009

VERTICAL DATUM:

NAVD 1988

STATION DESCRIPTION:

2" BRONZE DISC STAMPED "VILLAGE OF HUNTLEY-BENCHMARK-DO NOT DISTURB"



CHRISTOPHER B. BURKE ENGINEERING, LTD.
9575 W. Higgins Road, Suite 600
Rosemont, Illinois 60018
(847) 823-0500

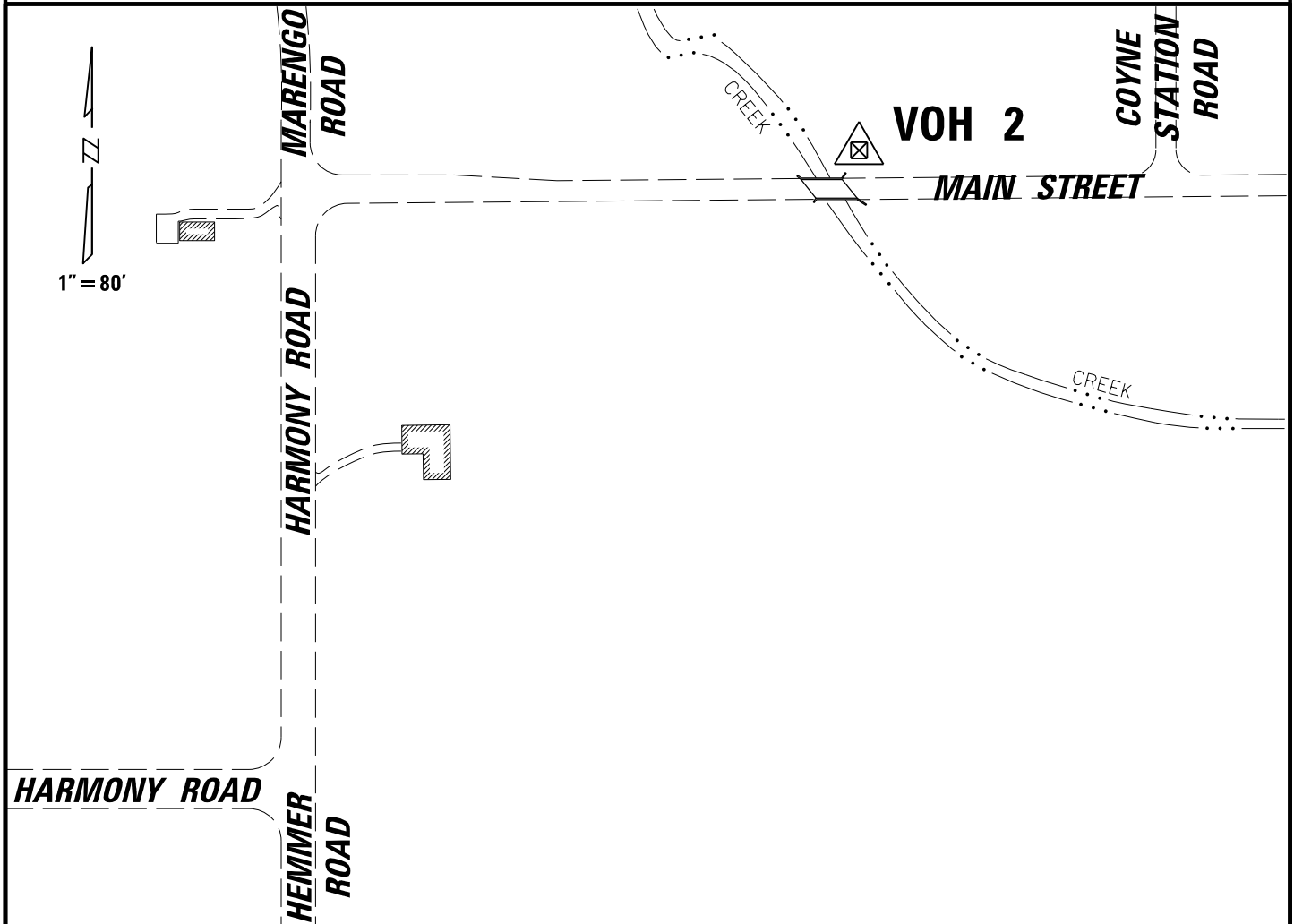
ELEVATION
272.907 METERS
895.36 FEET

STATION NAME

VOH 1



BENCHMARK INFORMATION SHEET



STATION LOCATION:

2" BRONZE DISC SET IN THE NORTHEAST CORNER OF NORTHERN CONCRETE HEADWALL OF THE MAIN STREET BRIDGE OVER CREEK.

BENCHMARK BASIS:

McHENRY COUNTY GEODETIC CONTROL NETWORK PROJECT REPORT "GPS-000268-4", DATED MARCH 19, 2001, PERFORMED BY SMITH ENGINEERING CONSULTANTS, INC. (4th ORDER CLASS 1)

CAUTION:

USE OF THIS INFORMATION SHOULD BE SUBJECT TO STRICT PROFESSIONAL SURVEYING PRINCIPLES AND VERIFICATION CHECKS. MONUMENTS MAY HAVE BEEN DISTURBED SINCE BEING ESTABLISHED BY CBBEL, WHICH MAY AFFECT THE VALIDITY AND ACCURACY OF THE DATA HEREIN PROVIDED. THIS DATA MAY FROM TIME-TO-TIME BE UPDATED.

STATION NAME:

VOH 2

DATE ESTABLISHED:

MAY 11, 2009

VERTICAL DATUM:

NAVD 1988

STATION DESCRIPTION:

2" BRONZE DISC STAMPED "VILLAGE OF HUNTLEY-BENCHMARK-DO NOT DISTURB"

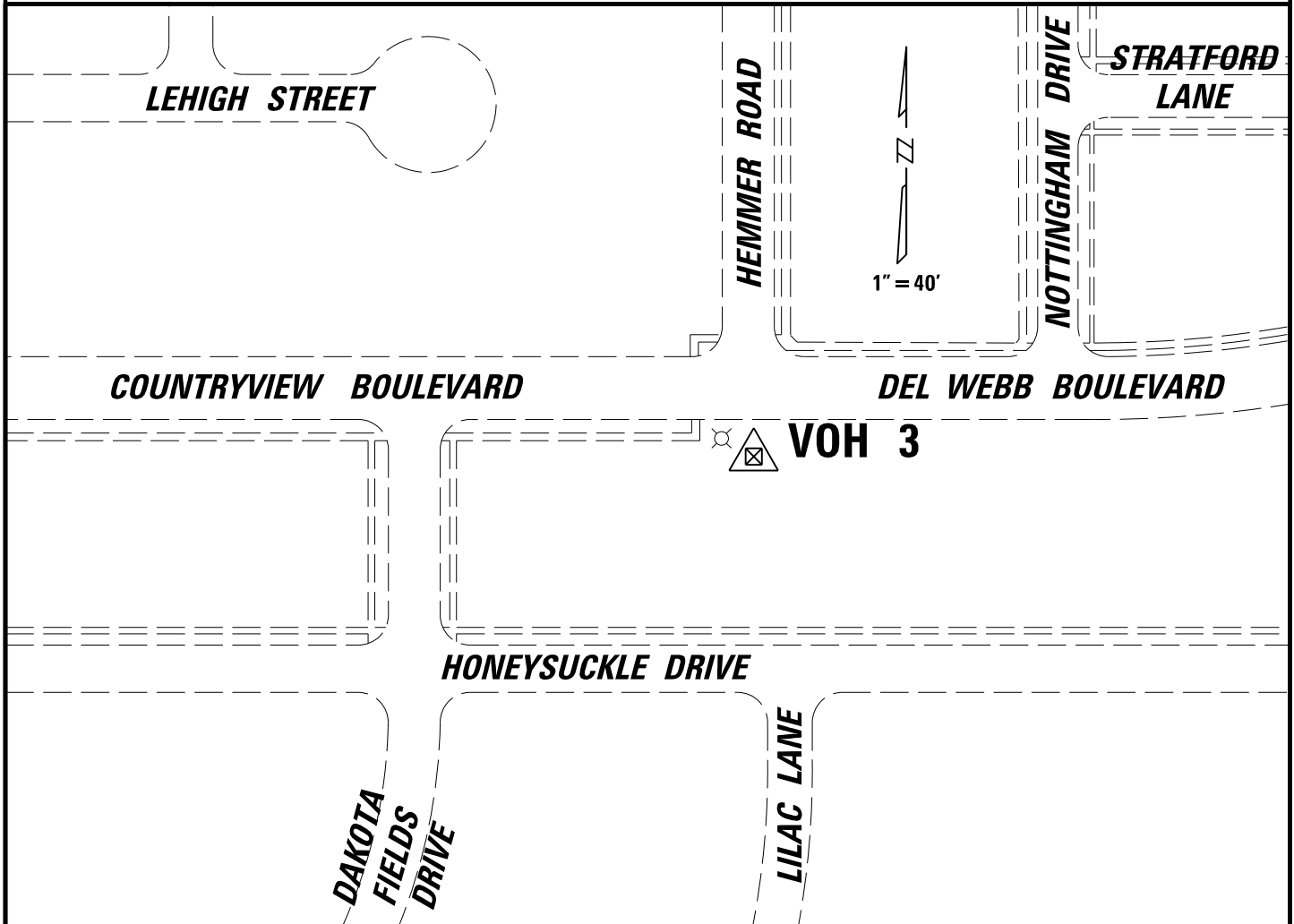
CBB CHRISTOPHER B. BURKE ENGINEERING, LTD.
 9575 W. Higgins Road, Suite 600
 Rosemont, Illinois 60018
 (847) 823-0500

ELEVATION
264.781 METERS
868.70 FEET

STATION NAME
VOH 2



BENCHMARK INFORMATION SHEET



STATION LOCATION:

2" BRONZE DISC SET IN CONCRETE BASE OF STREET LIGHT AT THE SOUTH SIDE OF INTERSECTION.

BENCHMARK BASIS:

McHENRY COUNTY GEODETIC CONTROL NETWORK PROJECT REPORT "GPS-000268-4", DATED MARCH 19, 2001, PERFORMED BY SMITH ENGINEERING CONSULTANTS, INC. (4th ORDER CLASS 1)

CAUTION:

USE OF THIS INFORMATION SHOULD BE SUBJECT TO STRICT PROFESSIONAL SURVEYING PRINCIPLES AND VERIFICATION CHECKS. MONUMENTS MAY HAVE BEEN DISTURBED SINCE BEING ESTABLISHED BY CBBEL, WHICH MAY AFFECT THE VALIDITY AND ACCURACY OF THE DATA HEREIN PROVIDED. THIS DATA MAY FROM TIME-TO-TIME BE UPDATED.

STATION NAME:

VOH 3

DATE ESTABLISHED:

MAY 11, 2009

VERTICAL DATUM:

NAVD 1988

STATION DESCRIPTION:

2" BRONZE DISC STAMPED "VILLAGE OF HUNTLEY-BENCHMARK-DO NOT DISTURB"



CHRISTOPHER B. BURKE ENGINEERING, LTD.
9575 W. Higgins Road, Suite 600
Rosemont, Illinois 60018
(847) 823-0500

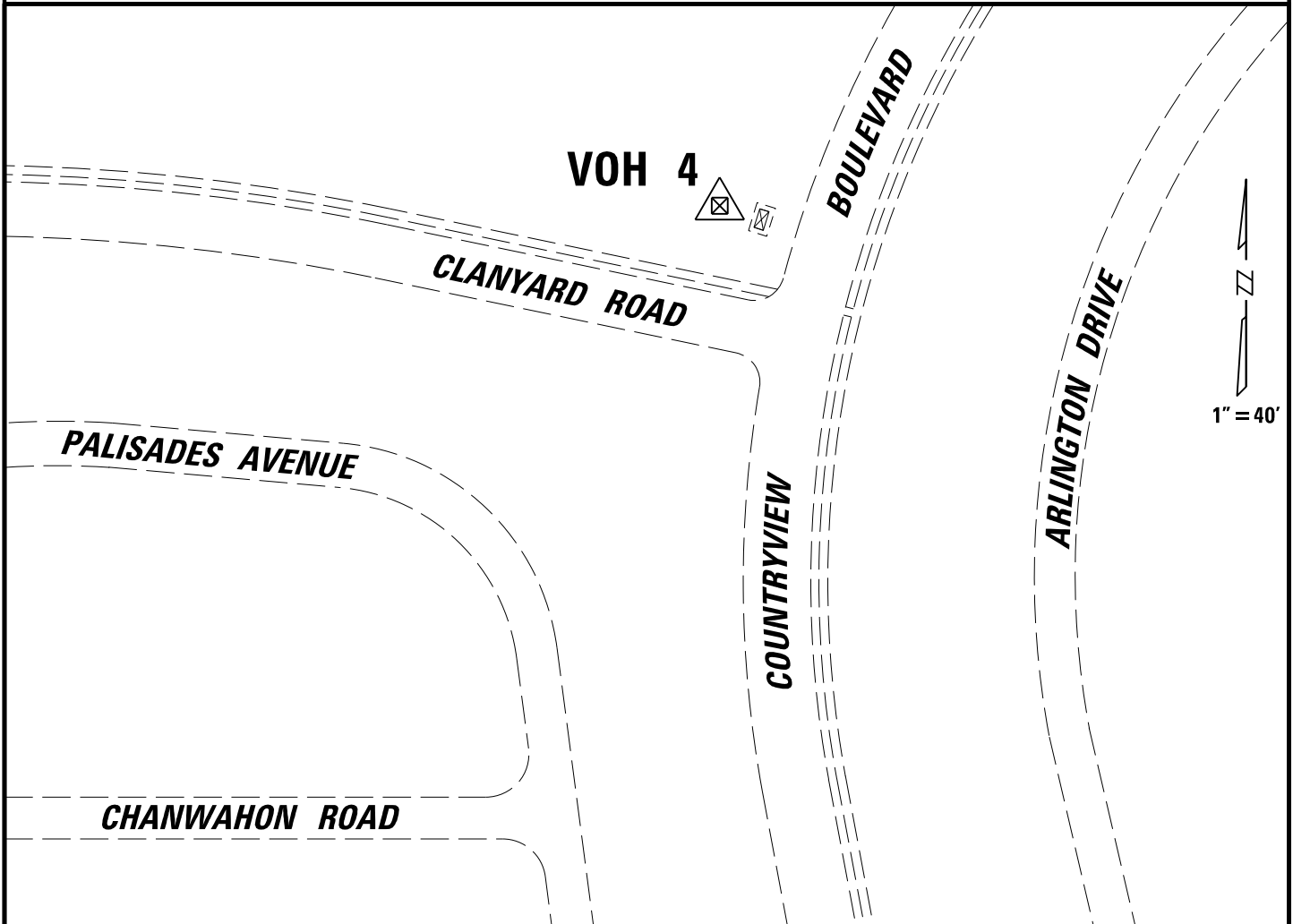
ELEVATION
268.069 METERS
879.49 FEET

STATION NAME

VOH 3



BENCHMARK INFORMATION SHEET



STATION LOCATION:

2" BRONZE DISC SET IN THE NORTHEAST CORNER OF A CONCRETE SLAB FOR A CONTROL BOX AT THE NORTHWEST CORNER OF CLANYARD ROAD AND COUNTRYVIEW BLVD.

BENCHMARK BASIS:

McHENRY COUNTY GEODETIC CONTROL NETWORK PROJECT REPORT "GPS-000268-4", DATED MARCH 19, 2001, PERFORMED BY SMITH ENGINEERING CONSULTANTS, INC. (4th ORDER CLASS 1)

CAUTION:

USE OF THIS INFORMATION SHOULD BE SUBJECT TO STRICT PROFESSIONAL SURVEYING PRINCIPLES AND VERIFICATION CHECKS. MONUMENTS MAY HAVE BEEN DISTURBED SINCE BEING ESTABLISHED BY CBBEL, WHICH MAY AFFECT THE VALIDITY AND ACCURACY OF THE DATA HEREIN PROVIDED. THIS DATA MAY FROM TIME-TO-TIME BE UPDATED.

STATION NAME:

VOH 4

DATE ESTABLISHED:

MAY 11, 2009

VERTICAL DATUM:

NAVD 1988

STATION DESCRIPTION:

2" BRONZE DISC STAMPED "VILLAGE OF HUNTLEY-BENCHMARK-DO NOT DISTURB"



CHRISTOPHER B. BURKE ENGINEERING, LTD.

9575 W. Higgins Road, Suite 600
Rosemont, Illinois 60018
(847) 823-0500

ELEVATION

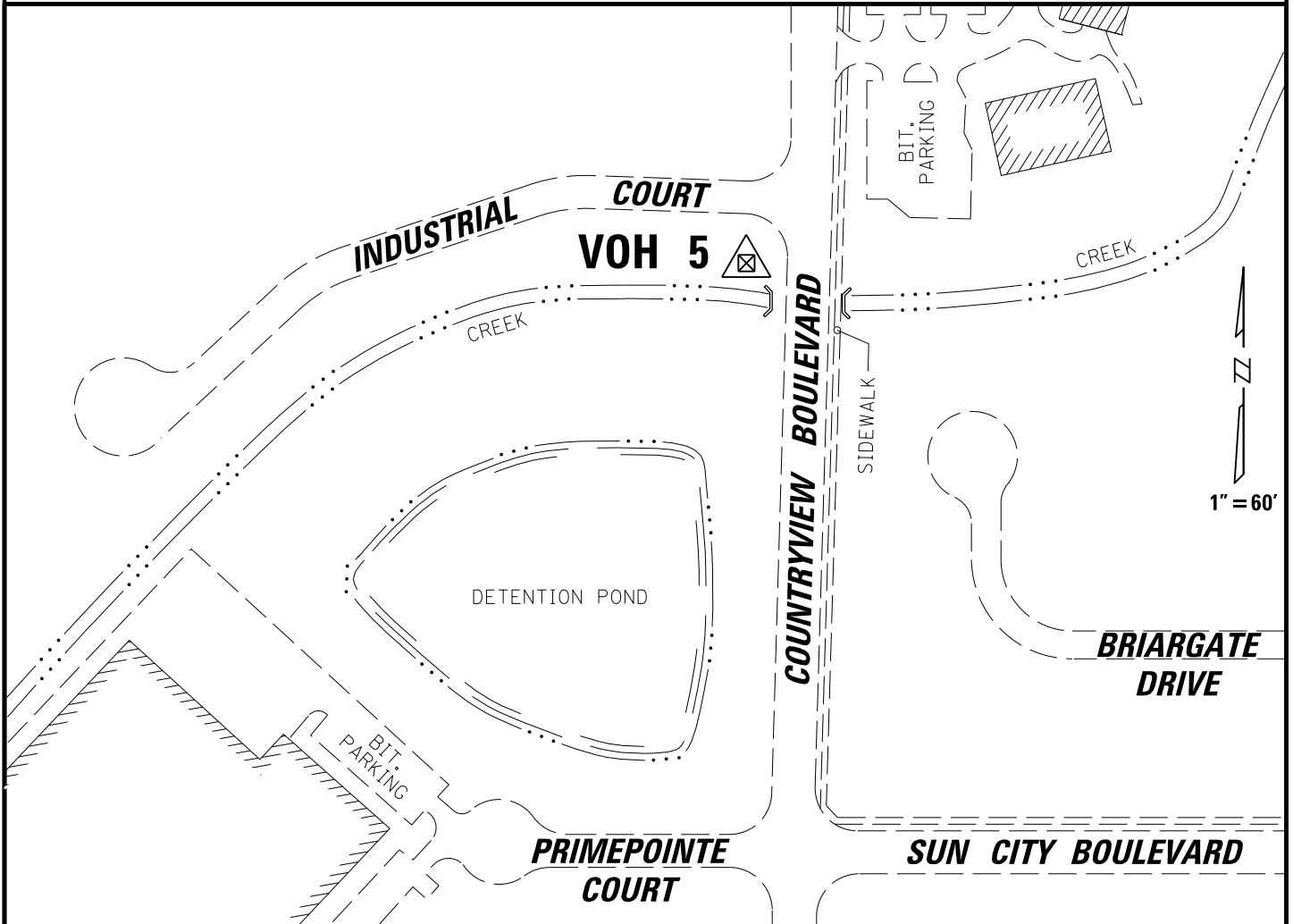
**272.867 METERS
895.23 FEET**

STATION NAME

VOH 4



BENCHMARK INFORMATION SHEET



STATION LOCATION:

2" BRONZE DISC SET ON WEST CONCRETE HEADWALL (NORTH END) OF THE HEADWALL OVER CREEK.

BENCHMARK BASIS:

McHENRY COUNTY GEODETIC CONTROL NETWORK PROJECT REPORT "GPS-000268-4", DATED MARCH 19, 2001, PERFORMED BY SMITH ENGINEERING CONSULTANTS, INC. (4th ORDER CLASS 1)

CAUTION:

USE OF THIS INFORMATION SHOULD BE SUBJECT TO STRICT PROFESSIONAL SURVEYING PRINCIPLES AND VERIFICATION CHECKS. MONUMENTS MAY HAVE BEEN DISTURBED SINCE BEING ESTABLISHED BY CBBEL, WHICH MAY AFFECT THE VALIDITY AND ACCURACY OF THE DATA HEREIN PROVIDED. THIS DATA MAY FROM TIME-TO-TIME BE UPDATED.

STATION NAME:

VOH 5

DATE ESTABLISHED:

MAY 11, 2009

VERTICAL DATUM:

NAVD 1988

STATION DESCRIPTION:

2" BRONZE DISC STAMPED "VILLAGE OF HUNTLEY-BENCHMARK-DO NOT DISTURB"



CHRISTOPHER B. BURKE ENGINEERING, LTD.
9575 W. Higgins Road, Suite 600
Rosemont, Illinois 60018
(847) 823-0500

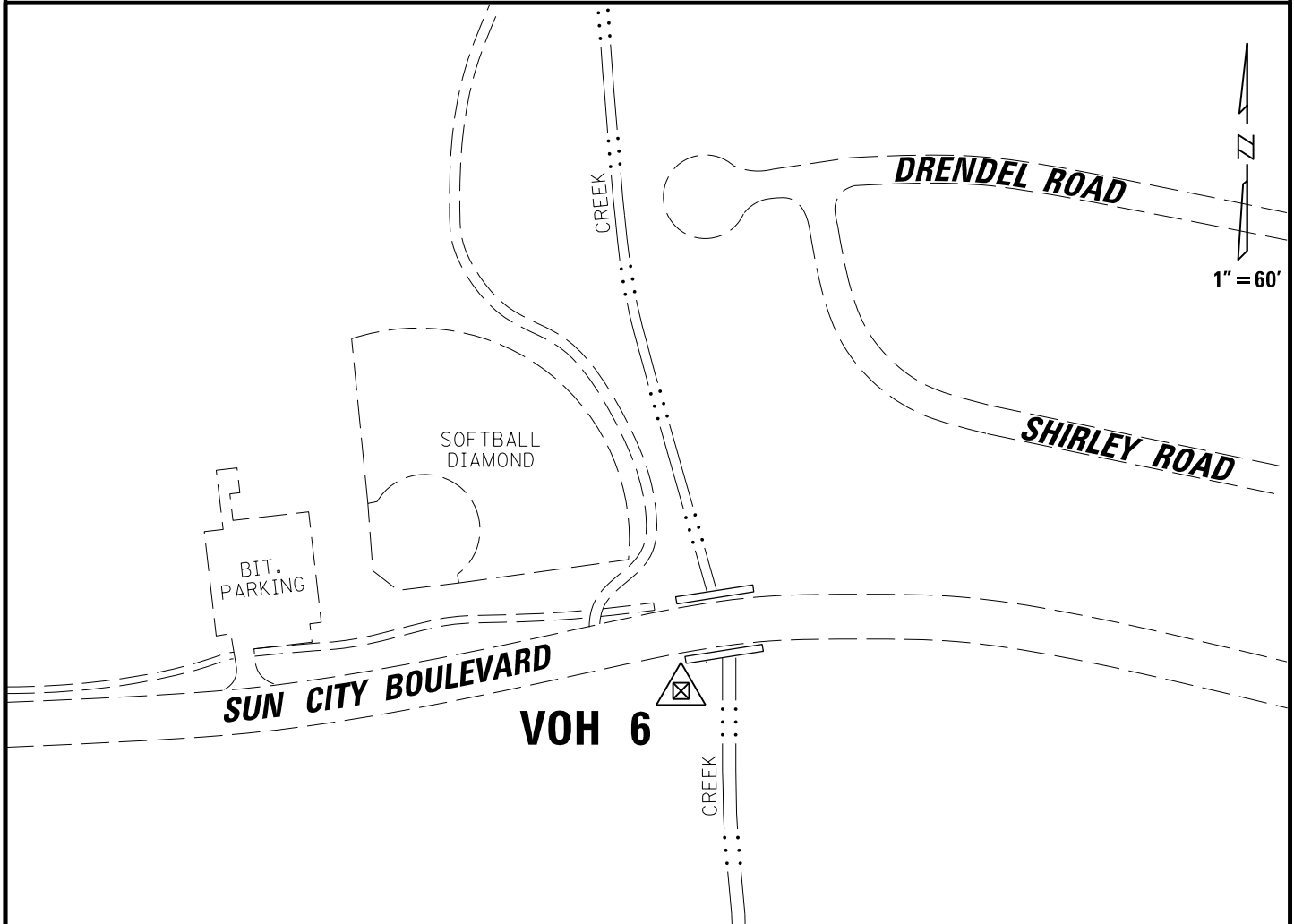
ELEVATION
274.643 METERS
901.06 FEET

STATION NAME

VOH 5



BENCHMARK INFORMATION SHEET



STATION LOCATION:

2" BRONZE DISC SET IN THE SOUTH HEADWALL AT THE WEST END OF THE TRIPLE BOX CULVERT UNDER SUN CITY BOULEVARD.

BENCHMARK BASIS:

McHENRY COUNTY GEODETIC CONTROL NETWORK PROJECT REPORT "GPS-000268-4", DATED MARCH 19, 2001, PERFORMED BY SMITH ENGINEERING CONSULTANTS, INC. (4th ORDER CLASS 1)

CAUTION:

USE OF THIS INFORMATION SHOULD BE SUBJECT TO STRICT PROFESSIONAL SURVEYING PRINCIPLES AND VERIFICATION CHECKS. MONUMENTS MAY HAVE BEEN DISTURBED SINCE BEING ESTABLISHED BY CBBEL, WHICH MAY AFFECT THE VALIDITY AND ACCURACY OF THE DATA HEREIN PROVIDED. THIS DATA MAY FROM TIME-TO-TIME BE UPDATED.

STATION NAME:

VOH 6

DATE ESTABLISHED:

MAY 11, 2009

VERTICAL DATUM:

NAVD 1988

STATION DESCRIPTION:

2" BRONZE DISC STAMPED "VILLAGE OF HUNTLEY-BENCHMARK-DO NOT DISTURB"



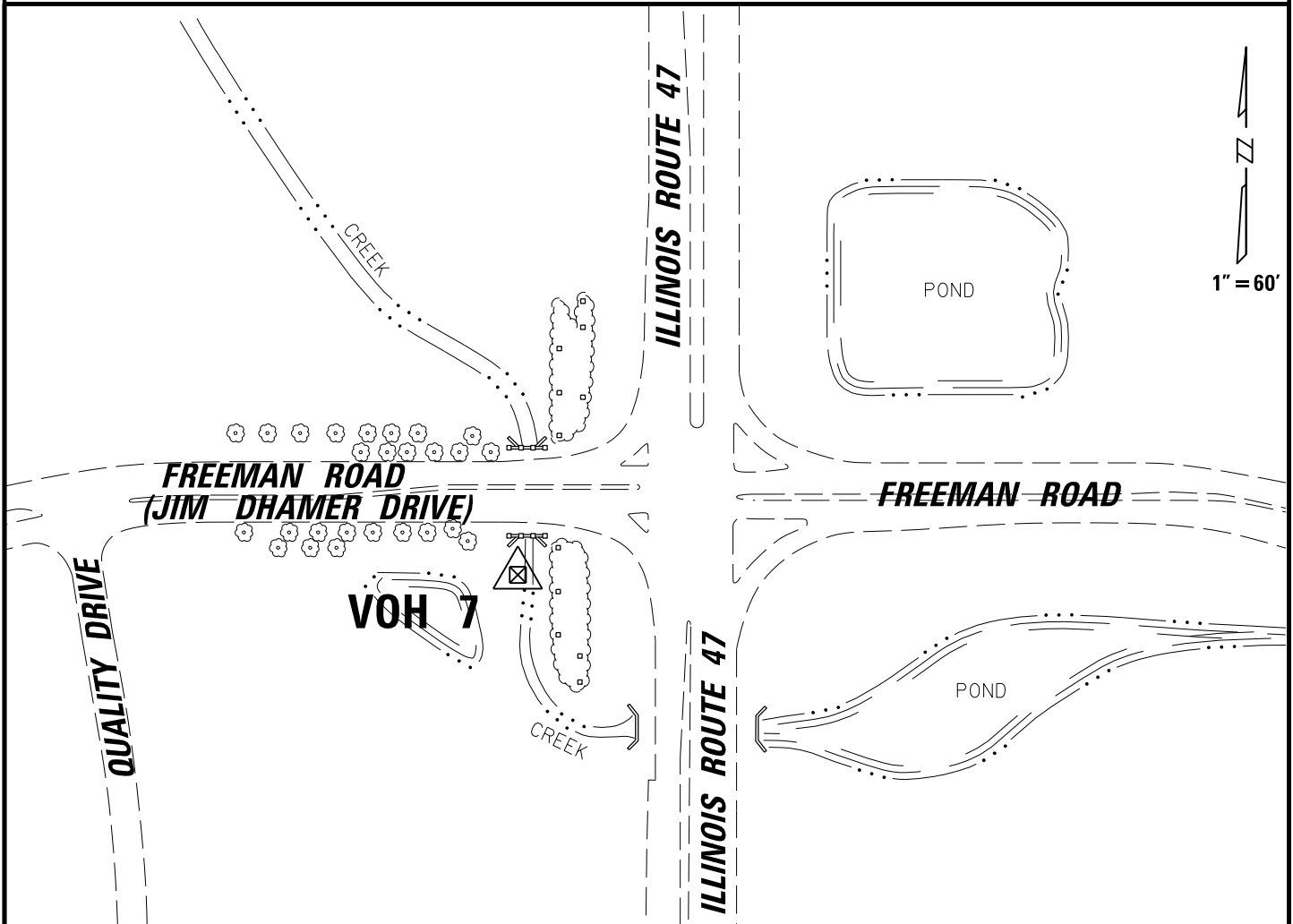
CHRISTOPHER B. BURKE ENGINEERING, LTD.
9575 W. Higgins Road, Suite 600
Rosemont, Illinois 60018
(847) 823-0500

ELEVATION
267.444 METERS
877.44 FEET

STATION NAME
VOH 6



BENCHMARK INFORMATION SHEET



STATION LOCATION:

2" BRONZE DISC SET IN WEST END OF SOUTH HEADWALL OVER CREEK, BETWEEN THE 1ST AND 2ND COLUMNS FROM THE WEST.

BENCHMARK BASIS:

McHENRY COUNTY GEODETIC CONTROL NETWORK PROJECT REPORT "GPS-000268-4", DATED MARCH 19, 2001, PERFORMED BY SMITH ENGINEERING CONSULTANTS, INC. (4th ORDER CLASS 1)

CAUTION:

USE OF THIS INFORMATION SHOULD BE SUBJECT TO STRICT PROFESSIONAL SURVEYING PRINCIPLES AND VERIFICATION CHECKS. MONUMENTS MAY HAVE BEEN DISTURBED SINCE BEING ESTABLISHED BY CBBEL, WHICH MAY AFFECT THE VALIDITY AND ACCURACY OF THE DATA HEREIN PROVIDED. THIS DATA MAY FROM TIME-TO-TIME BE UPDATED.

STATION NAME:

VOH 7

DATE ESTABLISHED:

MAY 11, 2009

VERTICAL DATUM:

NAVD 1988

STATION DESCRIPTION:

2" BRONZE DISC STAMPED "VILLAGE OF HUNTLEY-BENCHMARK-DO NOT DISTURB"



CHRISTOPHER B. BURKE ENGINEERING, LTD.
 9575 W. Higgins Road, Suite 600
 Rosemont, Illinois 60018
 (847) 823-0500

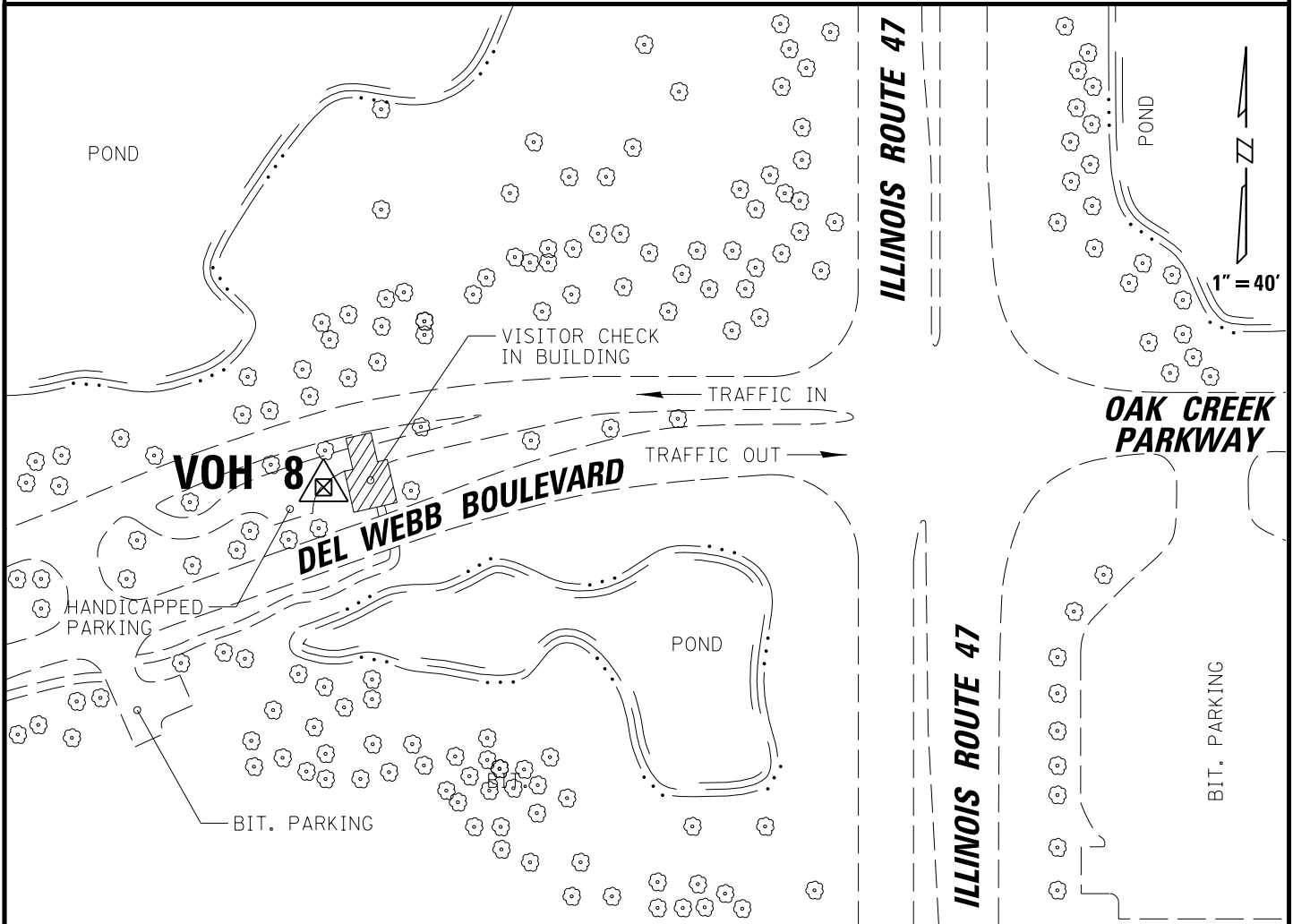
ELEVATION
272.679 METERS
894.61 FEET

STATION NAME

VOH 7



BENCHMARK INFORMATION SHEET



STATION LOCATION:

2" BRONZE DISC SET IN CONCRETE SIDEWALK AT NORTHWEST CORNER OF THE VISITOR CHECK IN BUILDING OF DEL WEBB'S SUN CITY SUBDIVISION.

BENCHMARK BASIS:

McHENRY COUNTY GEODETIC CONTROL NETWORK PROJECT REPORT "GPS-000268-4", DATED MARCH 19, 2001, PERFORMED BY SMITH ENGINEERING CONSULTANTS, INC. (4th ORDER CLASS 1)

CAUTION:

USE OF THIS INFORMATION SHOULD BE SUBJECT TO STRICT PROFESSIONAL SURVEYING PRINCIPLES AND VERIFICATION CHECKS. MONUMENTS MAY HAVE BEEN DISTURBED SINCE BEING ESTABLISHED BY CBBEL, WHICH MAY AFFECT THE VALIDITY AND ACCURACY OF THE DATA HEREIN PROVIDED. THIS DATA MAY FROM TIME-TO-TIME BE UPDATED.

STATION NAME:

VOH 8

DATE ESTABLISHED:

MAY 11, 2009

VERTICAL DATUM:

NAVD 1988

STATION DESCRIPTION:

2" BRONZE DISC STAMPED "VILLAGE OF HUNTLEY-BENCHMARK-DO NOT DISTURB"



CHRISTOPHER B. BURKE ENGINEERING, LTD.
 9575 W. Higgins Road, Suite 600
 Rosemont, Illinois 60018
 (847) 823-0500

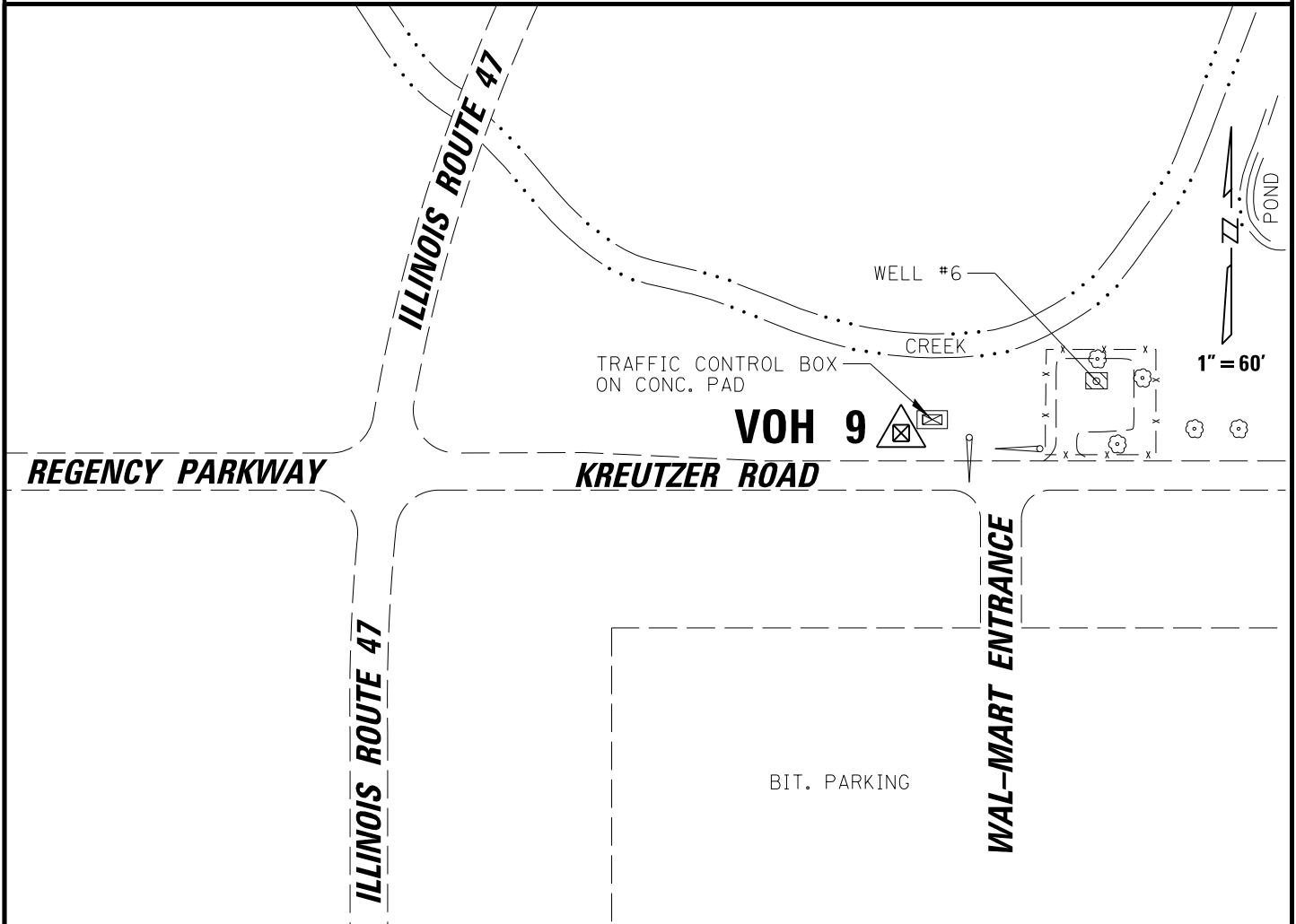
ELEVATION
274.561 METERS
900.79 FEET

STATION NAME

VOH 8



BENCHMARK INFORMATION SHEET



STATION LOCATION:

2" BRONZE DISC SET IN THE SOUTHWEST CORNER OF THE CONCRETE PAD FOR THE TRAFFIC CONTROL BOX ON THE NORTH SIDE OF KREUTZER ROAD (ACROSS FROM THE WAL-MART ENTRANCE).

BENCHMARK BASIS:

McHENRY COUNTY GEODETIC CONTROL NETWORK PROJECT REPORT "GPS-000268-4", DATED MARCH 19, 2001, PERFORMED BY SMITH ENGINEERING CONSULTANTS, INC. (4th ORDER CLASS 1)

CAUTION:

USE OF THIS INFORMATION SHOULD BE SUBJECT TO STRICT PROFESSIONAL SURVEYING PRINCIPLES AND VERIFICATION CHECKS. MONUMENTS MAY HAVE BEEN DISTURBED SINCE BEING ESTABLISHED BY CBBEL, WHICH MAY AFFECT THE VALIDITY AND ACCURACY OF THE DATA HEREIN PROVIDED. THIS DATA MAY FROM TIME-TO-TIME BE UPDATED.

STATION NAME:

VOH 9

DATE ESTABLISHED:

MAY 11, 2009

VERTICAL DATUM:

NAVD 1988

STATION DESCRIPTION:

2" BRONZE DISC STAMPED "VILLAGE OF HUNTLEY-BENCHMARK-DO NOT DISTURB"



CHRISTOPHER B. BURKE ENGINEERING, LTD.
 9575 W. Higgins Road, Suite 600
 Rosemont, Illinois 60018
 (847) 823-0500

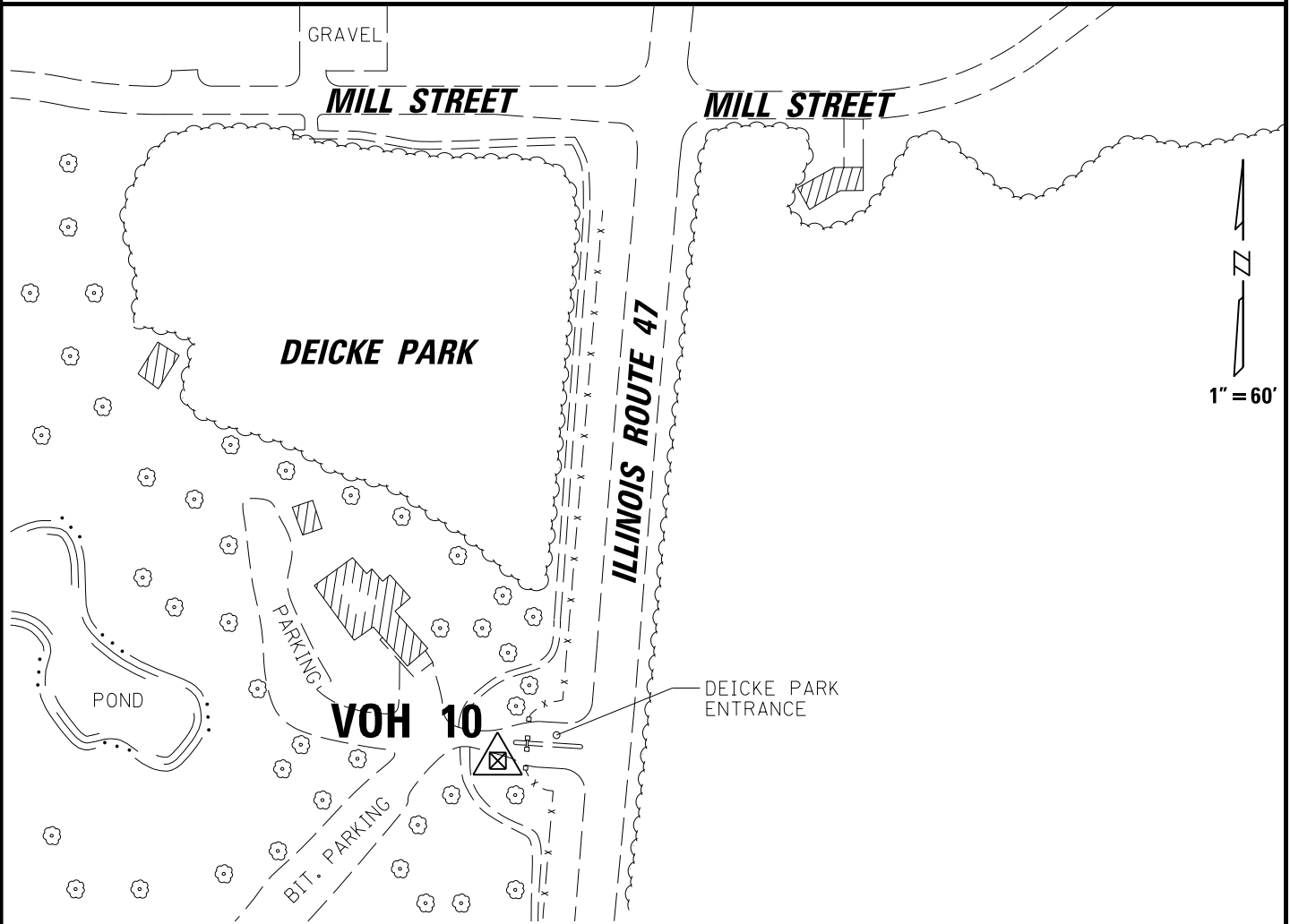
ELEVATION
267.510 METERS
877.66 FEET

STATION NAME

VOH 9



BENCHMARK INFORMATION SHEET



STATION LOCATION:

2" BRONZE DISC SET IN CONCRETE CURB ON CENTER ISLAND OF DEICKE PARK ENTRANCE WHERE SOUTH CURB MEETS STONE PILLAR.

BENCHMARK BASIS:

McHENRY COUNTY GEODETIC CONTROL NETWORK PROJECT REPORT "GPS-000268-4", DATED MARCH 19, 2001, PERFORMED BY SMITH ENGINEERING CONSULTANTS, INC. (4th ORDER CLASS 1)

CAUTION:

USE OF THIS INFORMATION SHOULD BE SUBJECT TO STRICT PROFESSIONAL SURVEYING PRINCIPLES AND VERIFICATION CHECKS. MONUMENTS MAY HAVE BEEN DISTURBED SINCE BEING ESTABLISHED BY CBBEL, WHICH MAY AFFECT THE VALIDITY AND ACCURACY OF THE DATA HEREIN PROVIDED. THIS DATA MAY FROM TIME-TO-TIME BE UPDATED.

STATION NAME:

VOH 10

DATE ESTABLISHED:

MAY 11, 2009

VERTICAL DATUM:

NAVD 1988

STATION DESCRIPTION:

2" BRONZE DISC STAMPED "VILLAGE OF HUNTLEY-BENCHMARK-DO NOT DISTURB"



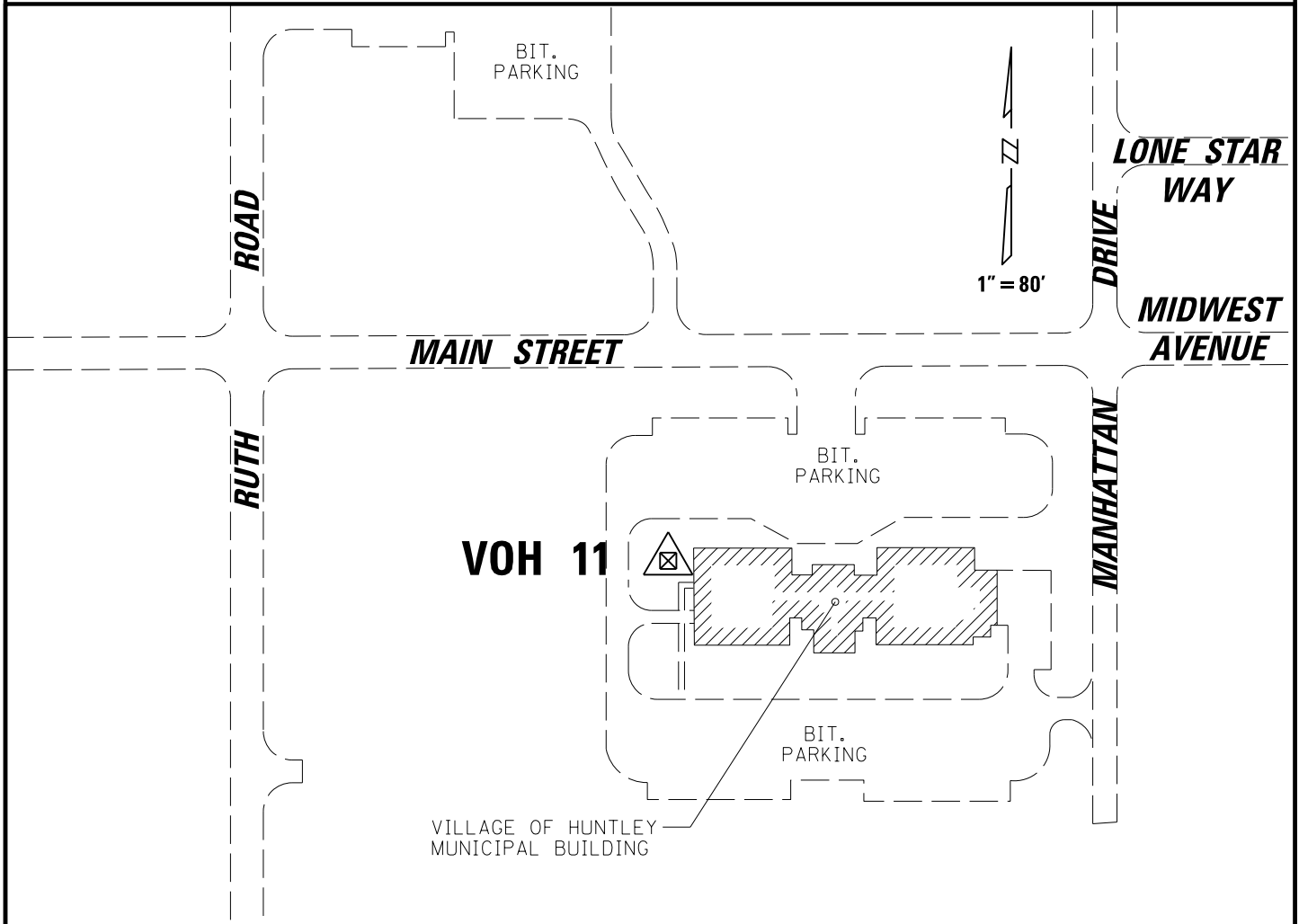
CHRISTOPHER B. BURKE ENGINEERING, LTD.
9575 W. Higgins Road, Suite 600
Rosemont, Illinois 60018
(847) 823-0500

ELEVATION
270.164 METERS
886.36 FEET

STATION NAME
VOH 10



BENCHMARK INFORMATION SHEET



STATION LOCATION:

2" BRONZE DISC SET IN CONCRETE SIDEWALK FOR THE WEST ENTRANCE DOOR OF THE VILLAGE OF HUNTLEY MUNICIPAL BUILDING.

BENCHMARK BASIS:

McHENRY COUNTY GEODETIC CONTROL NETWORK PROJECT REPORT "GPS-000268-4", DATED MARCH 19, 2001, PERFORMED BY SMITH ENGINEERING CONSULTANTS, INC. (4th ORDER CLASS 1)

CAUTION:

USE OF THIS INFORMATION SHOULD BE SUBJECT TO STRICT PROFESSIONAL SURVEYING PRINCIPLES AND VERIFICATION CHECKS. MONUMENTS MAY HAVE BEEN DISTURBED SINCE BEING ESTABLISHED BY CBBEL, WHICH MAY AFFECT THE VALIDITY AND ACCURACY OF THE DATA HEREIN PROVIDED. THIS DATA MAY FROM TIME-TO-TIME BE UPDATED.

STATION NAME:

VOH 11

DATE ESTABLISHED:

MAY 11, 2009

VERTICAL DATUM:

NAVD 1988

STATION DESCRIPTION:

2" BRONZE DISC STAMPED "VILLAGE OF HUNTLEY-BENCHMARK-DO NOT DISTURB"



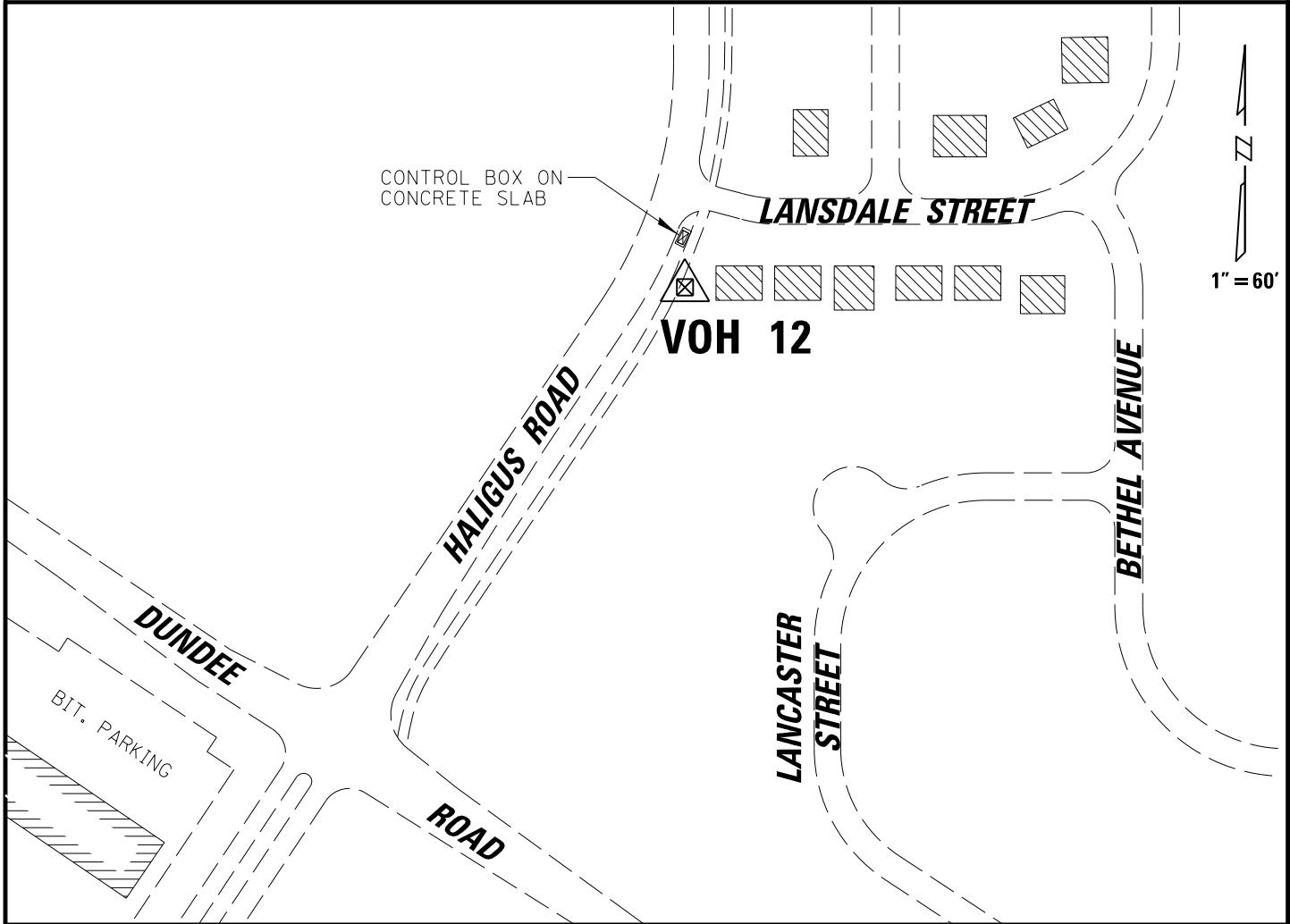
CHRISTOPHER B. BURKE ENGINEERING, LTD.
9575 W. Higgins Road, Suite 600
Rosemont, Illinois 60018
(847) 823-0500

ELEVATION
273.850 METERS
898.46 FEET

STATION NAME
VOH 11



BENCHMARK INFORMATION SHEET



STATION LOCATION:

2" BRONZE DISC SET IN CONCRETE IN THE SOUTHWEST CORNER OF A CONCRETE SLAB FOR A CONTROL BOX AT THE SOUTHEAST CORNER OF HALIGUS ROAD AND LANSDALE STREET.

BENCHMARK BASIS:

McHENRY COUNTY GEODETIC CONTROL NETWORK PROJECT REPORT "GPS-000268-4", DATED MARCH 19, 2001, PERFORMED BY SMITH ENGINEERING CONSULTANTS, INC. (4th ORDER CLASS 1)

CAUTION:

USE OF THIS INFORMATION SHOULD BE SUBJECT TO STRICT PROFESSIONAL SURVEYING PRINCIPLES AND VERIFICATION CHECKS. MONUMENTS MAY HAVE BEEN DISTURBED SINCE BEING ESTABLISHED BY CBBEL, WHICH MAY AFFECT THE VALIDITY AND ACCURACY OF THE DATA HEREIN PROVIDED. THIS DATA MAY FROM TIME-TO-TIME BE UPDATED.

STATION NAME:

VOH 12

DATE ESTABLISHED:

MAY 11, 2009

VERTICAL DATUM:

NAVD 1988

STATION DESCRIPTION:

2" BRONZE DISC STAMPED "VILLAGE OF HUNTLEY-BENCHMARK-DO NOT DISTURB"



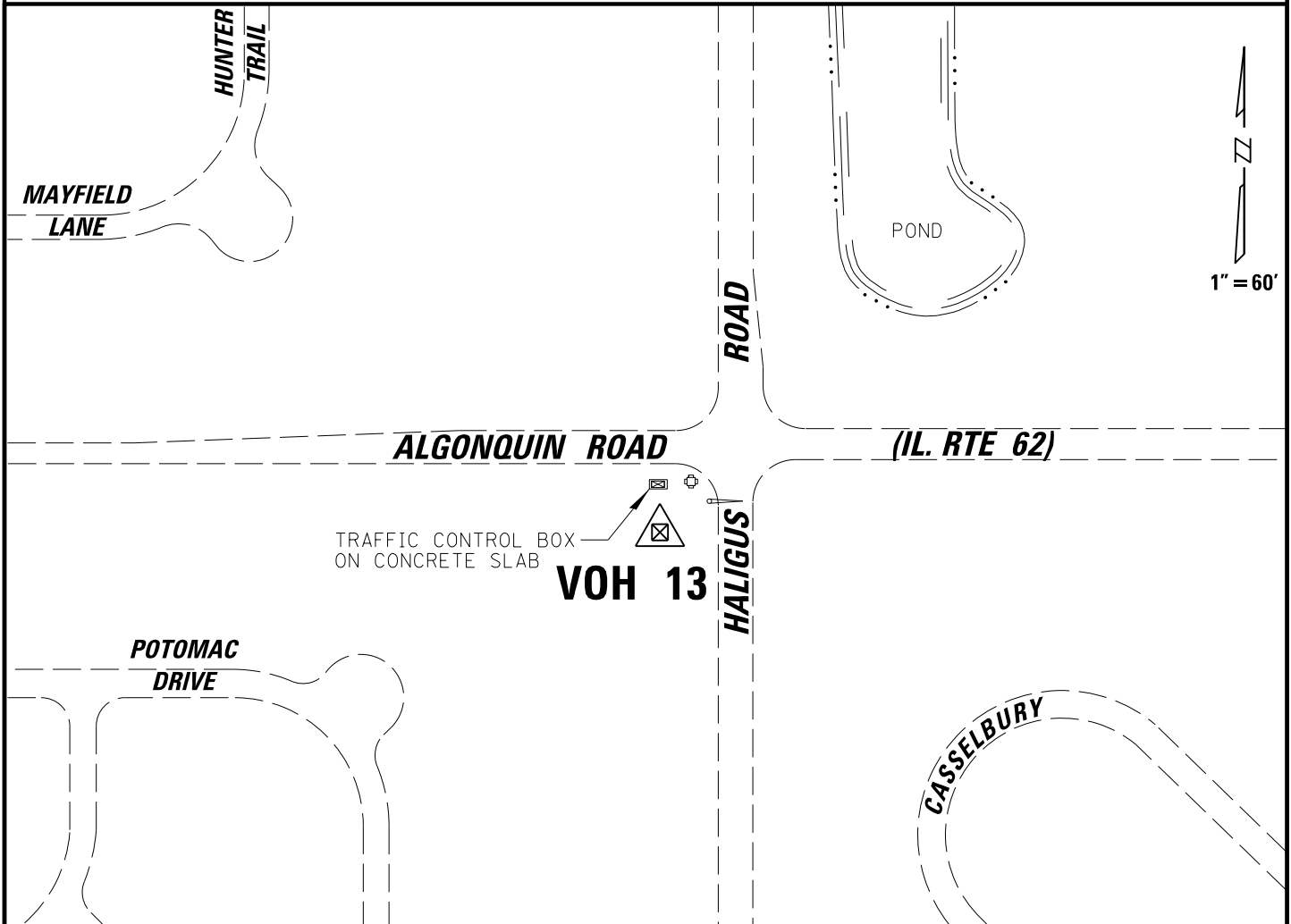
CHRISTOPHER B. BURKE ENGINEERING, LTD.
9575 W. Higgins Road, Suite 600
Rosemont, Illinois 60018
(847) 823-0500

ELEVATION
276.410 METERS
906.85 FEET

STATION NAME
VOH 12



BENCHMARK INFORMATION SHEET



STATION LOCATION:

2" BRONZE DISC SET IN NORTHEAST CORNER OF THE CONCRETE PAD FOR THE TRAFFIC SIGNAL CONTROL BOX AT THE SOUTHWEST CORNER OF ALGONQUIN AND HALIGUS ROADS.

BENCHMARK BASIS:

McHENRY COUNTY GEODETIC CONTROL NETWORK PROJECT REPORT "GPS-000268-4", DATED MARCH 19, 2001, PERFORMED BY SMITH ENGINEERING CONSULTANTS, INC. (4th ORDER CLASS 1)

CAUTION:

USE OF THIS INFORMATION SHOULD BE SUBJECT TO STRICT PROFESSIONAL SURVEYING PRINCIPLES AND VERIFICATION CHECKS. MONUMENTS MAY HAVE BEEN DISTURBED SINCE BEING ESTABLISHED BY CBBEL, WHICH MAY AFFECT THE VALIDITY AND ACCURACY OF THE DATA HEREIN PROVIDED. THIS DATA MAY FROM TIME-TO-TIME BE UPDATED.

STATION NAME:

VOH 13

DATE ESTABLISHED:

MAY 11, 2009

VERTICAL DATUM:

NAVD 1988

STATION DESCRIPTION:

2" BRONZE DISC STAMPED "VILLAGE OF HUNTLEY-BENCHMARK-DO NOT DISTURB"



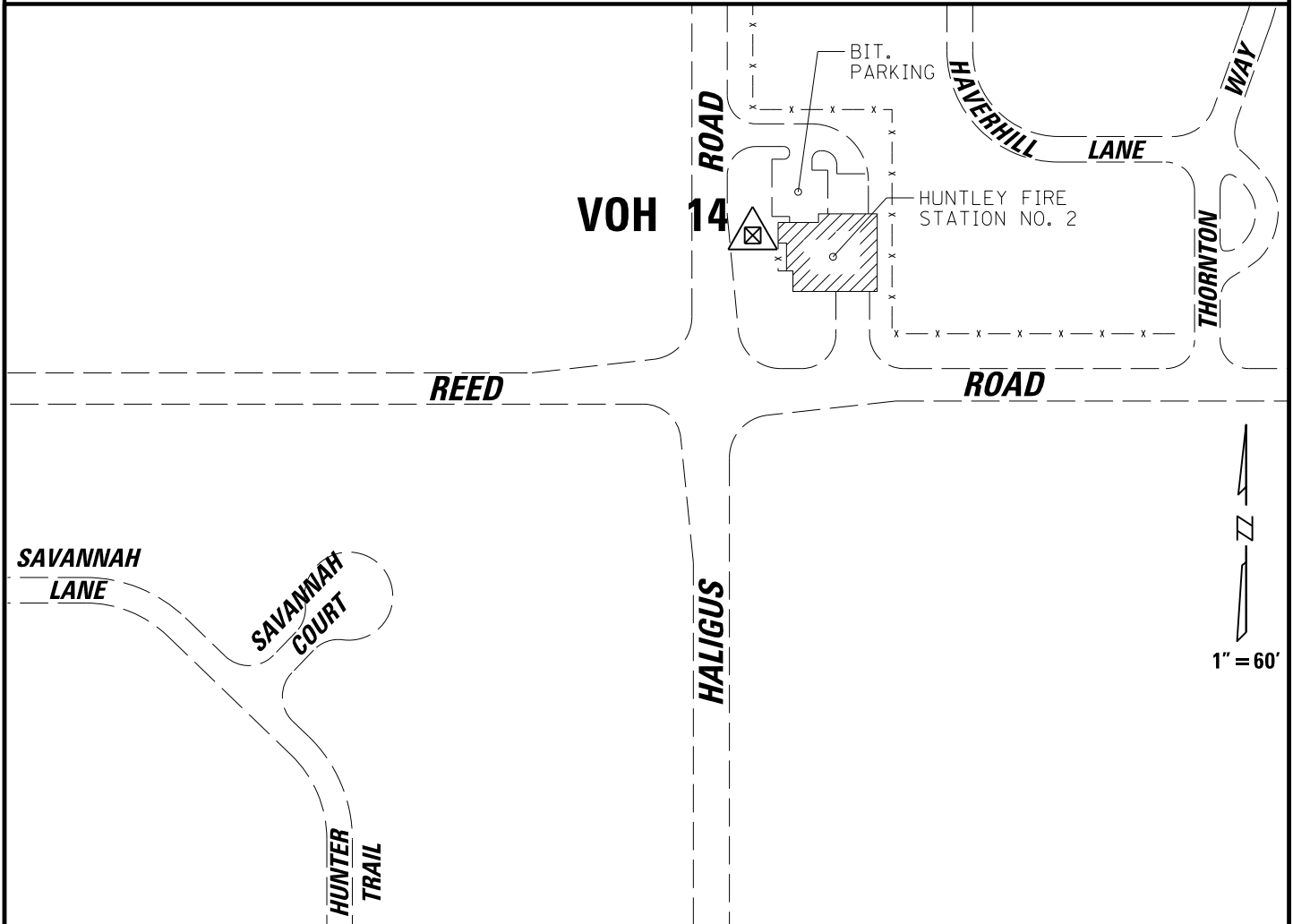
CHRISTOPHER B. BURKE ENGINEERING, LTD.
9575 W. Higgins Road, Suite 600
Rosemont, Illinois 60018
(847) 823-0500

ELEVATION
271.420 METERS
890.49 FEET

STATION NAME
VOH 13



BENCHMARK INFORMATION SHEET



STATION LOCATION:

2" BRONZE DISC SET IN CONC. SIDEWALK ON SOUTH SIDE OF WEST DOOR OF HUNTLEY FIRE STATION NO. 2.

BENCHMARK BASIS:

McHENRY COUNTY GEODETIC CONTROL NETWORK PROJECT REPORT "GPS-000268-4", DATED MARCH 19, 2001, PERFORMED BY SMITH ENGINEERING CONSULTANTS, INC. (4th ORDER CLASS 1)

CAUTION:

USE OF THIS INFORMATION SHOULD BE SUBJECT TO STRICT PROFESSIONAL SURVEYING PRINCIPLES AND VERIFICATION CHECKS. MONUMENTS MAY HAVE BEEN DISTURBED SINCE BEING ESTABLISHED BY CBBEL, WHICH MAY AFFECT THE VALIDITY AND ACCURACY OF THE DATA HEREIN PROVIDED. THIS DATA MAY FROM TIME-TO-TIME BE UPDATED.

STATION NAME:

VOH 14

DATE ESTABLISHED:

MAY 11, 2009

VERTICAL DATUM:

NAVD 1988

STATION DESCRIPTION:

2" BRONZE DISC STAMPED "VILLAGE OF HUNTLEY-BENCHMARK-DO NOT DISTURB"



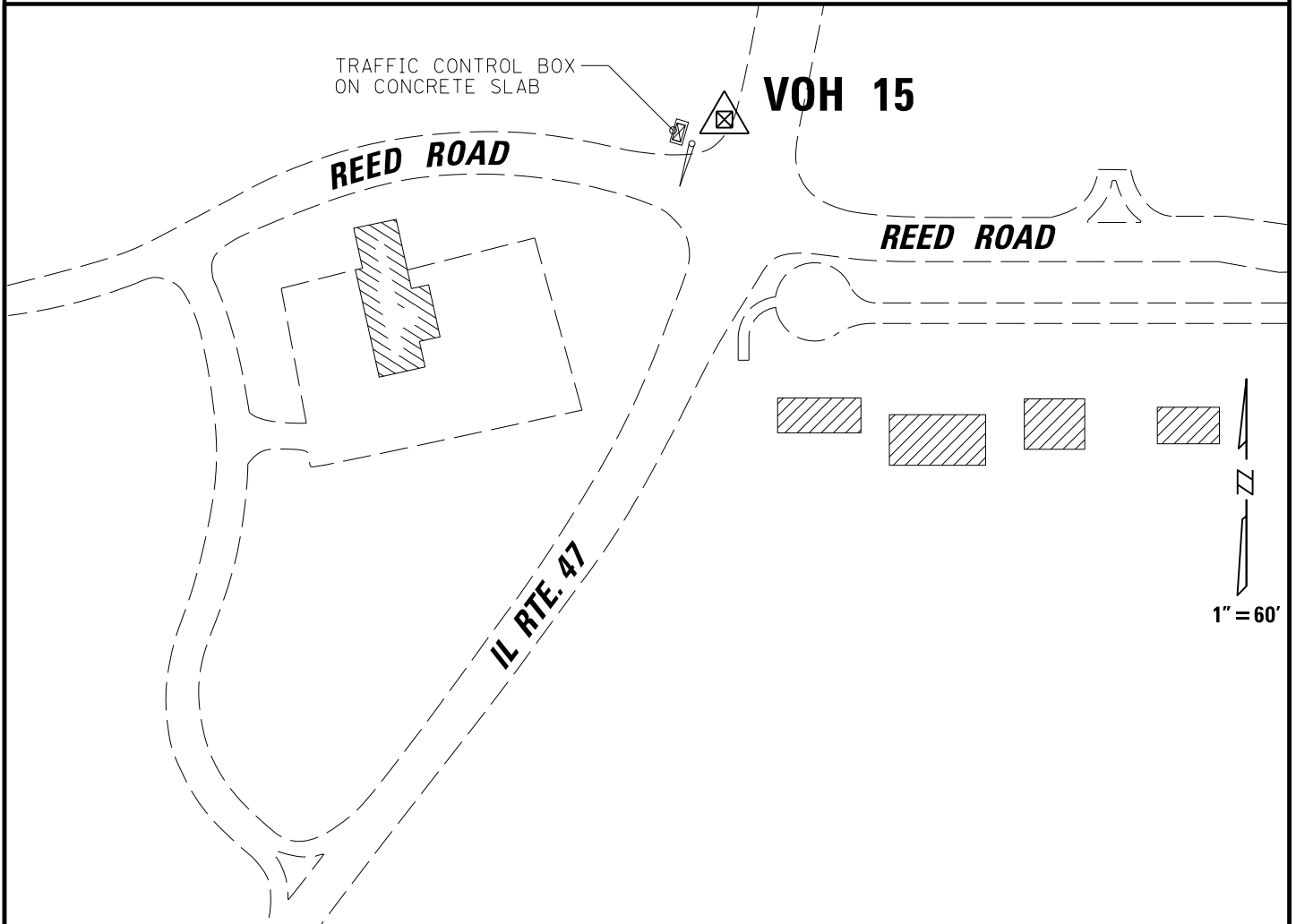
CHRISTOPHER B. BURKE ENGINEERING, LTD.
9575 W. Higgins Road, Suite 600
Rosemont, Illinois 60018
(847) 823-0500

ELEVATION
269.532 METERS
884.29 FEET

STATION NAME
VOH 14



BENCHMARK INFORMATION SHEET



STATION LOCATION:

2" BRONZE DISC SET IN THE SOUTHWEST CORNER OF THE CONCRETE PAD FOR THE TRAFFIC CONTROL BOX AT THE NORTHWEST CORNER OF REED ROAD AND ILLINOIS ROUTE 47.

BENCHMARK BASIS:

McHENRY COUNTY GEODETIC CONTROL NETWORK PROJECT REPORT "GPS-000268-4", DATED MARCH 19, 2001, PERFORMED BY SMITH ENGINEERING CONSULTANTS, INC. (4th ORDER CLASS 1)

CAUTION:

USE OF THIS INFORMATION SHOULD BE SUBJECT TO STRICT PROFESSIONAL SURVEYING PRINCIPLES AND VERIFICATION CHECKS. MONUMENTS MAY HAVE BEEN DISTURBED SINCE BEING ESTABLISHED BY CBBEL, WHICH MAY AFFECT THE VALIDITY AND ACCURACY OF THE DATA HEREIN PROVIDED. THIS DATA MAY FROM TIME-TO-TIME BE UPDATED.

STATION NAME:

VOH 15

DATE ESTABLISHED:

MAY 11, 2009

VERTICAL DATUM:

NAVD 1988

STATION DESCRIPTION:

2" BRONZE DISC STAMPED "VILLAGE OF HUNTLEY-BENCHMARK-DO NOT DISTURB"



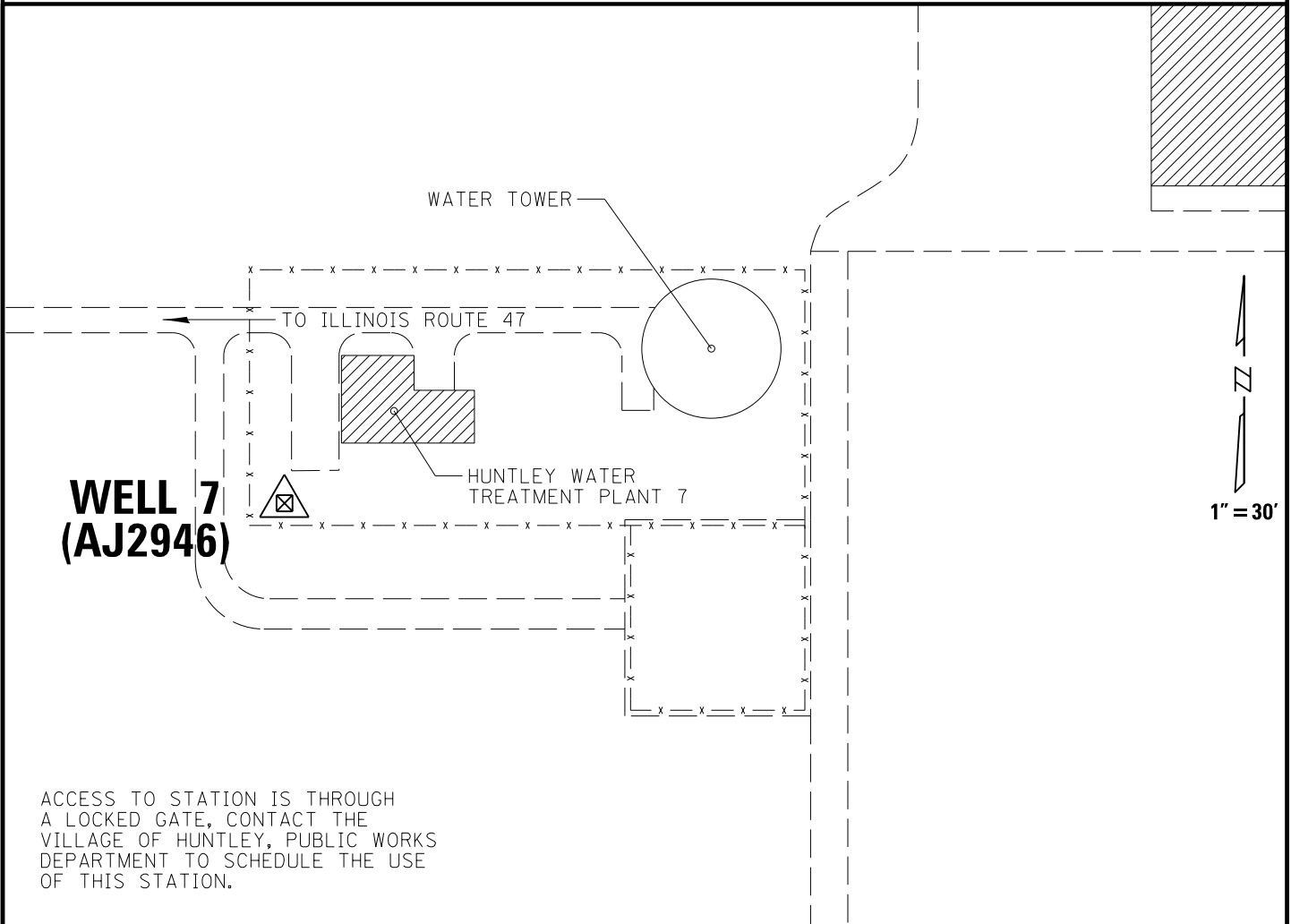
CHRISTOPHER B. BURKE ENGINEERING, LTD.
9575 W. Higgins Road, Suite 600
Rosemont, Illinois 60018
(847) 823-0500

ELEVATION
268.275 METERS
880.17 FEET

STATION NAME
VOH 15



BENCHMARK INFORMATION SHEET



ACCESS TO STATION IS THROUGH A LOCKED GATE, CONTACT THE VILLAGE OF HUNTLEY, PUBLIC WORKS DEPARTMENT TO SCHEDULE THE USE OF THIS STATION.

STATION LOCATION:

STAINLESS STEEL ROD IN SLEEVE BENEATH A SIX INCH LOGO CAP LOCATED AT THE SOUTHWEST CORNER OF THE VILLAGE OF HUNTLEY WATER TREATMENT PLANT 7 FENCED COMPOUND JUST EAST OF ILLINOIS ROUTE 47.

BENCHMARK BASIS:

McHENRY COUNTY GEODETIC CONTROL NETWORK PROJECT REPORT "GPS-000268-4", DATED MARCH 19, 2001, PERFORMED BY SMITH ENGINEERING CONSULTANTS, INC. (4th ORDER CLASS 1)

CAUTION:

USE OF THIS INFORMATION SHOULD BE SUBJECT TO STRICT PROFESSIONAL SURVEYING PRINCIPLES AND VERIFICATION CHECKS. MONUMENTS MAY HAVE BEEN DISTURBED SINCE BEING ESTABLISHED BY CBBEL, WHICH MAY AFFECT THE VALIDITY AND ACCURACY OF THE DATA HEREIN PROVIDED. THIS DATA MAY FROM TIME-TO-TIME BE UPDATED.

STATION NAME:

HUNTLEY WELL 7 (AJ2946)

DATE ESTABLISHED:

MARCH 19, 2001

VERTICAL DATUM:

NAVD 1988

STATION DESCRIPTION:

STAINLESS STEEL ROD IN SLEEVE (10 FT±)

HORIZONTAL DATUM:

ILLINOIS EAST STATE PLANE COORDINATES

NAD '83 (HARN)

LATITUDE: 42°07' 54.64293"

LONGITUDE: 088°25' 44.68398"



CHRISTOPHER B. BURKE ENGINEERING, LTD.

9575 W. Higgins Road, Suite 600
Rosemont, Illinois 60018
(847) 823-0500

ELEVATION
275.119 METERS
902.65 FEET

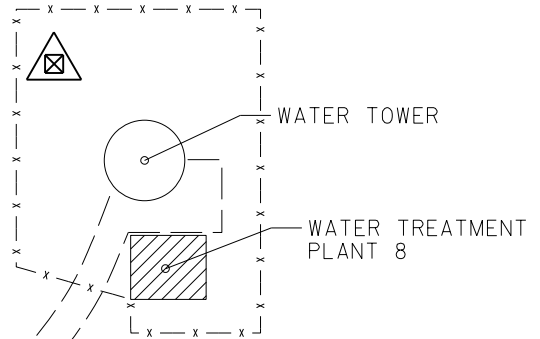
STATION NAME

WELL 7



BENCHMARK INFORMATION SHEET

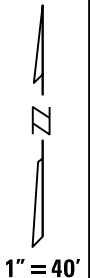
**WELL 8
(AJ2944)**



MARVIN DRIVE

BEDFORD DRIVE

YARDLEY DRIVE



ACCESS TO STATION IS THROUGH A LOCKED GATE, CONTACT THE VILLAGE OF HUNTLEY, PUBLIC WORKS DEPARTMENT TO SCHEDULE THE USE OF THIS STATION.

STATION LOCATION:

STAINLESS STEEL ROD IN SLEEVE BENEATH A SIX INCH LOGO CAP LOCATED NEAR THE NORTHWEST CORNER OF THE VILLAGE OF HUNTLEY WATER TREATMENT PLANT 8 COMPOUND, WHICH IS AT THE INTERSECTION OF BEDFORD AND MARVIN DRIVE.

BENCHMARK BASIS:

McHENRY COUNTY GEODETIC CONTROL NETWORK PROJECT REPORT "GPS-000268-4", DATED MARCH 19, 2001, PERFORMED BY SMITH ENGINEERING CONSULTANTS, INC. (4th ORDER CLASS 1)

CAUTION:

USE OF THIS INFORMATION SHOULD BE SUBJECT TO STRICT PROFESSIONAL SURVEYING PRINCIPLES AND VERIFICATION CHECKS. MONUMENTS MAY HAVE BEEN DISTURBED SINCE BEING ESTABLISHED BY CBBEL, WHICH MAY AFFECT THE VALIDITY AND ACCURACY OF THE DATA HEREIN PROVIDED. THIS DATA MAY FROM TIME-TO-TIME BE UPDATED.

STATION NAME:

HUNTLEY WELL 8 (AJ2944)

DATE ESTABLISHED:

MARCH 19, 2001

VERTICAL DATUM:

NAVD 1988

STATION DESCRIPTION:

STAINLESS STEEL ROD IN SLEEVE (10 FT±)

HORIZONTAL DATUM:

ILLINOIS EAST STATE PLANE COORDINATES

NAD '83 (HARN)

LATITUDE: 42°11' 24.17469"

LONGITUDE: 088°23' 20.93083"



CHRISTOPHER B. BURKE ENGINEERING, LTD.

9575 W. Higgins Road, Suite 600
Rosemont, Illinois 60018
(847) 823-0500

ELEVATION

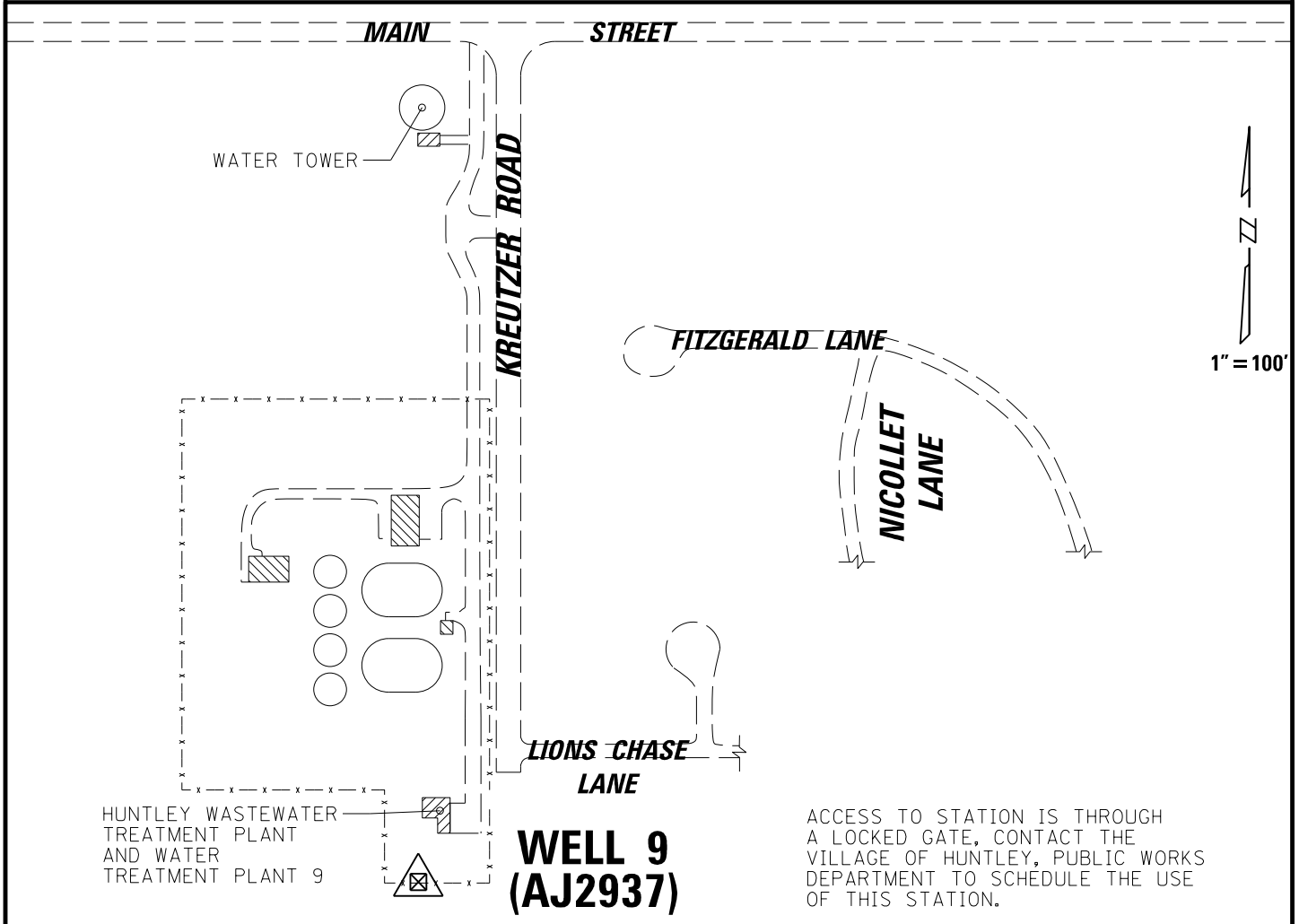
**265.789 METERS
871.97 FEET**

STATION NAME

WELL 8



BENCHMARK INFORMATION SHEET



ACCESS TO STATION IS THROUGH A LOCKED GATE, CONTACT THE VILLAGE OF HUNTLEY, PUBLIC WORKS DEPARTMENT TO SCHEDULE THE USE OF THIS STATION.

STATION LOCATION:

STAINLESS STEEL ROD IN SLEEVE BENEATH A SIX INCH LOGO CAP LOCATED APPROX. 88 FFET SOUTHWEST OF THE WESTERLY, SOUTHWEST CORNER OF THE BRICK WELL HOUSE AT THE VILLAGE OF HUNTLEY WATER TREATMENT PLANT WELL 9 ON KREUTZER ROAD JUST SOUTH OF MAIN ST.

BENCHMARK BASIS:

McHENRY COUNTY GEODETIC CONTROL NETWORK PROJECT REPORT "GPS-000268-4", DATED MARCH 19, 2001, PERFORMED BY SMITH ENGINEERING CONSULTANTS, INC. (4th ORDER CLASS 1)

CAUTION:

USE OF THIS INFORMATION SHOULD BE SUBJECT TO STRICT PROFESSIONAL SURVEYING PRINCIPLES AND VERIFICATION CHECKS. MONUMENTS MAY HAVE BEEN DISTURBED SINCE BEING ESTABLISHED BY CBBEL, WHICH MAY AFFECT THE VALIDITY AND ACCURACY OF THE DATA HEREIN PROVIDED. THIS DATA MAY FROM TIME-TO-TIME BE UPDATED.

STATION NAME:

HUNTLEY WELL 9 (AJ2937)

DATE ESTABLISHED:

MARCH 19, 2001

VERTICAL DATUM:

NAVD 1988

STATION DESCRIPTION:

STAINLESS STEEL ROD IN SLEEVE (10 FT±)

HORIZONTAL DATUM:

ILLINOIS EAST STATE PLANE COORDINATES
 NAD '83 (HARN)
 LATITUDE: 42°09' 49.06474"
 LONGITUDE: 088°26' 32.86340"



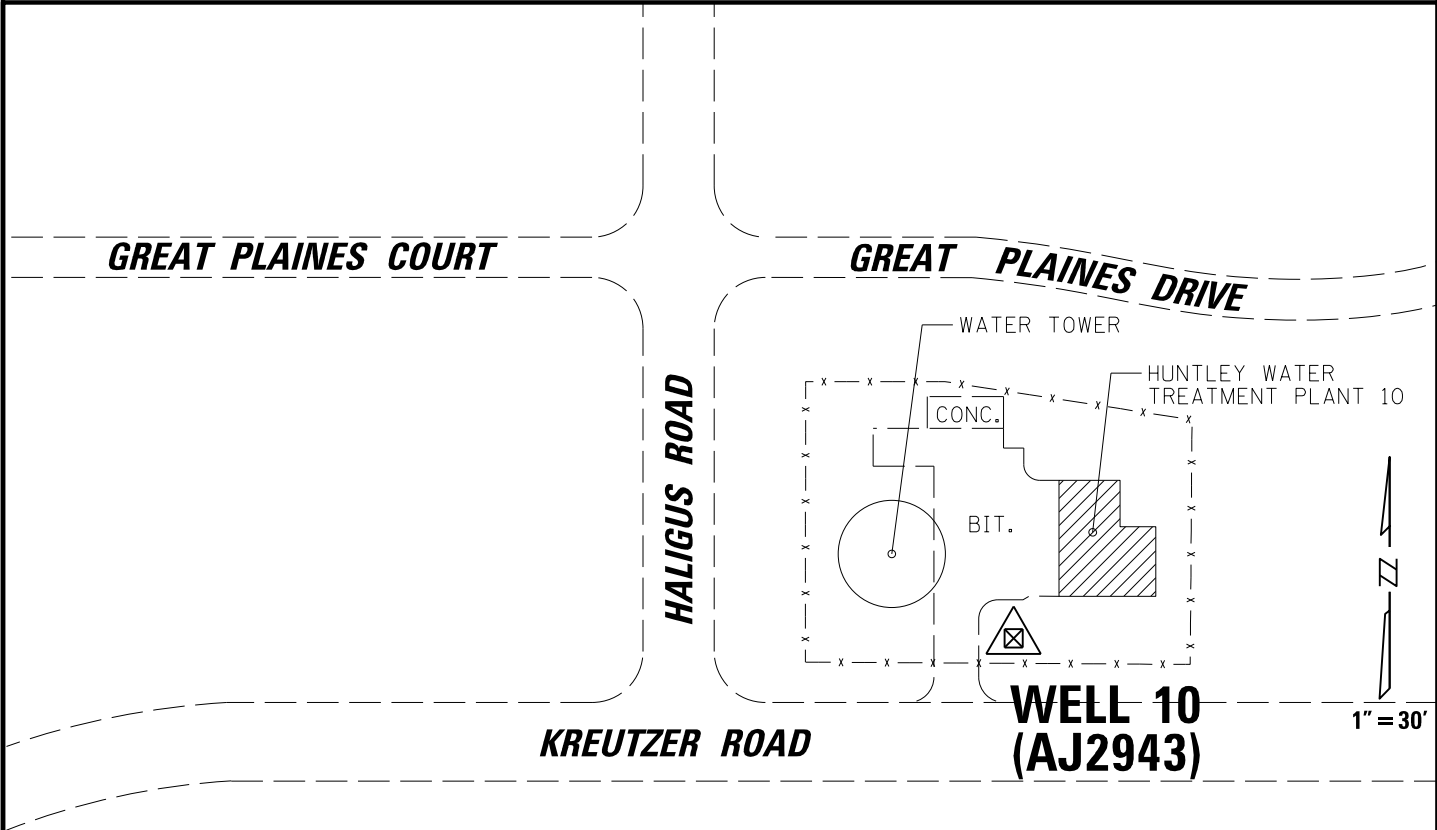
CHRISTOPHER B. BURKE ENGINEERING, LTD.
 9575 W. Higgins Road, Suite 600
 Rosemont, Illinois 60018
 (847) 823-0500

ELEVATION
265.761 METERS
871.92 FEET

STATION NAME
WELL 9



BENCHMARK INFORMATION SHEET



ACCESS TO STATION IS THROUGH
A LOCKED GATE, CONTACT THE
VILLAGE OF HUNTLEY, PUBLIC WORKS
DEPARTMENT TO SCHEDULE THE USE
OF THIS STATION.

STATION LOCATION:

STAINLESS STEEL ROD IN SLEEVE BENEATH A SIX INCH LOGO CAP
LOCATED APPROX. 53 FEET SOUTHEAST OF THE WATER TOWER ACCESS DOOR
WITHIN THE VILLAGE OF HUNTLEY WATER TREATMENT PLANT WELL 10
FENCED COMPOUND LOCATED AT THE NORTHEAST CORNER OF KREUTZER AND
HALIGUS ROAD.

BENCHMARK BASIS:

McHENRY COUNTY GEODETIC CONTROL NETWORK PROJECT REPORT
"GPS-000268-4", DATED MARCH 19, 2001, PERFORMED BY SMITH
ENGINEERING CONSULTANTS, INC. (4th ORDER CLASS 1)

CAUTION:

USE OF THIS INFORMATION SHOULD BE SUBJECT TO STRICT PROFESSIONAL
SURVEYING PRINCIPLES AND VERIFICATION CHECKS. MONUMENTS MAY HAVE
BEEN DISTURBED SINCE BEING ESTABLISHED BY CBBEL, WHICH MAY
AFFECT THE VALIDITY AND ACCURACY OF THE DATA HEREIN PROVIDED.
THIS DATA MAY FROM TIME-TO-TIME BE UPDATED.

STATION NAME:

HUNTLEY WELL 10 (AJ2943)

DATE ESTABLISHED:

MARCH 19, 2001

VERTICAL DATUM:

NAVD 1988

STATION DESCRIPTION:

STAINLESS STEEL ROD IN SLEEVE (10 FT±)

HORIZONTAL DATUM:

ILLINOIS EAST STATE PLANE COORDINATES

NAD '83 (HARN)

LATITUDE: 42°09' 14.69429"

LONGITUDE: 088°24' 22.05740"



CHRISTOPHER B. BURKE ENGINEERING, LTD.

9575 W. Higgins Road, Suite 600
Rosemont, Illinois 60018
(847) 823-0500

ELEVATION

**269.749 METERS
885.01 FEET**

STATION NAME

WELL 10